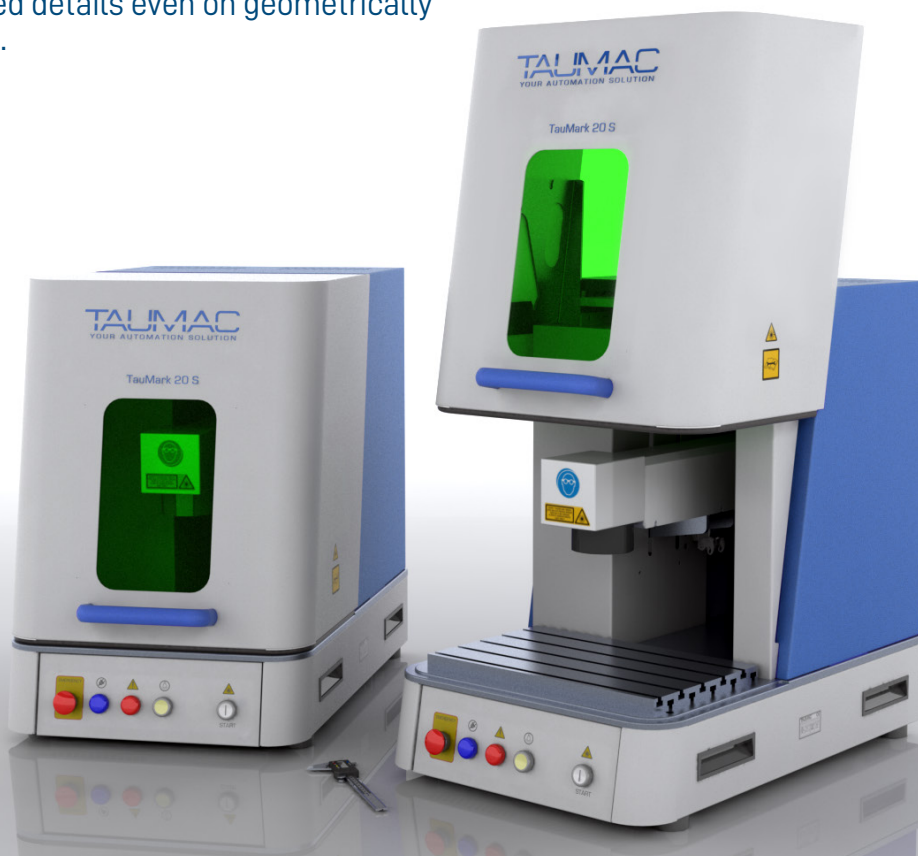


# TAUMARK S SERIES

TAUMARK S series marking systems are developed for precise marking on any small object, to have clear and defined details even on geometrically complex pieces.



## Ease and speed of use

The software developed and integrated by Taumac, makes it easy to use TauMark S to define parameters and ensure speed in the execution of marking and/ or engraving.



## Wide range of accessories

It can be integrated with a wide range of Taumac accessories such as: spindle, static clamp, XY table or plate towing.



## Wide range of sources

Depending on the customer's needs, it makes these products truly complete. Laser sources can be inserted: Fiber (up to 60W), Co2, Green and UV.

## Main features:

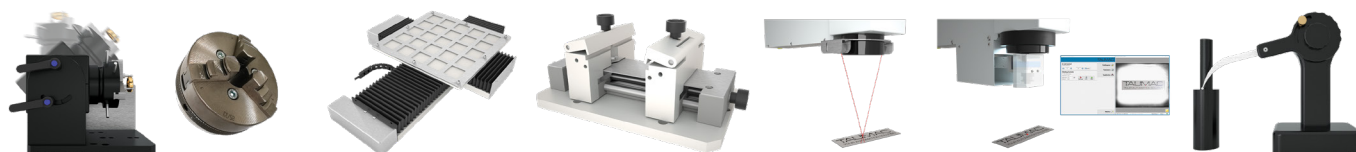
- Wide opening door (450mm);
- Inclined opening door for a better view of the working point;
- Large working area 550x500mm also useful for future integrations;
- Care in the interior spaces for better recovery of metal;
- Fine pointer of the file centering red;
- Professional and parameterizable multilingual software by operator and company;
- Import files in the most popular formats by technical and graphic software;
- Large window for internal vision;
- Large stroke (185mm) of the Z axis to integrate future automations.



## Technical Data

POWER	FIBER (20W, 30W, 50W, 60W) CO2 (10W, 30W) UV (3W, 5W, 7W) GREEN (3W, 5W, 7W) NIB
FREQUENCY	Da 1 a 2000 KHz in various modules depending on the application
WAVE LENGHT	1064 +/- 4nm
FOCUSING LENSES	F100 (60x60) F160 (100x100) F210 (240x240)
RED DIODE LASER FOR FILE CENTERING	Laser Diode 650nm 2mW
PC CONNECTION	USB 2
COOLING	AIR
WORKING CHAMBER	450x285mm Door Opening: 370mm
WORKING ENVIRONMENT	10°C-35°C / 30% TO 85% of humidity
DIMENSIONS AND WEIGHT	480x780x710mm / 87kg
POWER SUPPLY	230V +/- 10% 50/60 Hz Absorption 400-900W

## Most used accessories



All information contained in our catalogues (features, images and technical data) may be subject to changes or changes and variations.